

ACCESSORIES

WARNING

Accessories which are not properly fitted can be dangerous. Read the instructions carefully prior to fitting. Whilst fitting, comply with the instructions at all times. If in doubt, contact your nearest Land Rover Dealer.

ACHTUNG!

Nicht sachgemäß montiertes Zubehör kann gefährlich sein. Lesen Sie die Montageanleitung sorgfältig. Bevor Sie das Teil montieren. Halten Sie sich bei der Montage an die Anleitung. Bei Unklarheiten wenden Sie sich bitte an Ihren Land Rover Händler.

AVERTISSEMENT

Les accessoires qui ne sont pas correctement montés risquent d'être dangereux. Veuillez lire soigneusement les instructions avant d'effectuer la pose. Respectez toujours les instructions en cours de pose. En cas de doute, consultez votre concessionnaire Land Rover local.

AVVERTENZA

Gli accessori non sistemati come previsto possono essere pericolosi. Leggere attentamente le istruzioni prima del fissaggio. Durante il montaggio seguire sempre le relative istruzioni. In caso di dubbio rivolgersi al più vicino concessionario della Land Rover.

AVISO

Os Accesorios que no hayan sido ajustados debidamente pueden resultar peligrosos. Lea las instrucciones detenidamente antes de iniciar el Montaje. Durante el montaje siga las instrucciones en todo momento. En caso de duda pongase en contacto con su concesionario de Land Rover.

ADVERTENCIA!

Os Accesorios que nao sao montados adequadamente podem ser perigosos. Leia as instrucoes todo o tempo. Se tiver alguma dúvida, contacte o Concessionário Land Rover mais próximo.

FITTING INSTRUCTION
side step

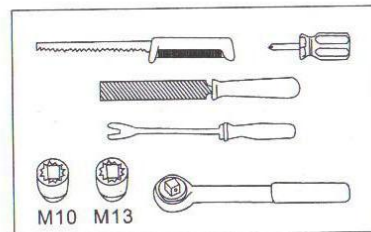
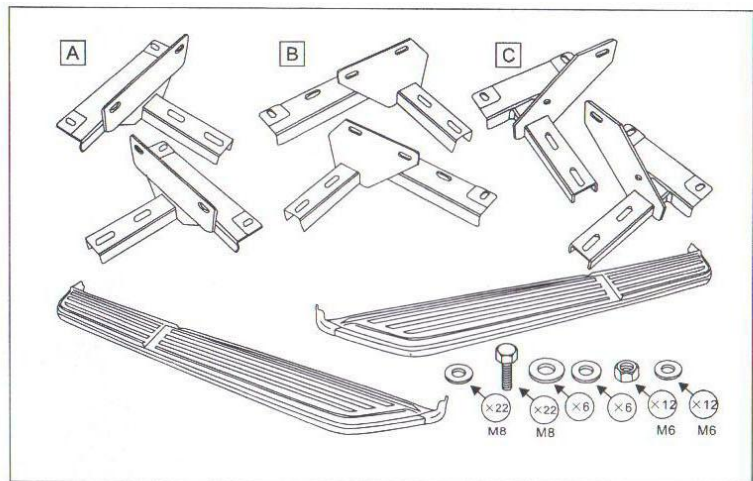
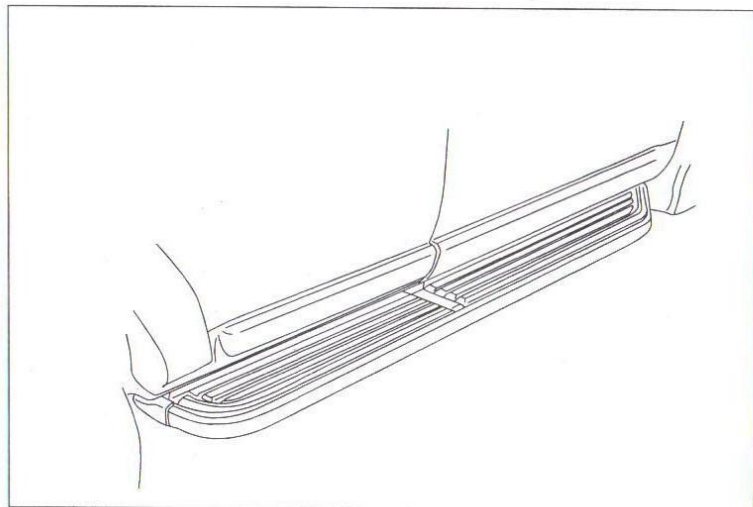
EINBAUANLEITUNG
seitentrittbrett

INSTRUCTION DE MONTAGE
le Marchepied

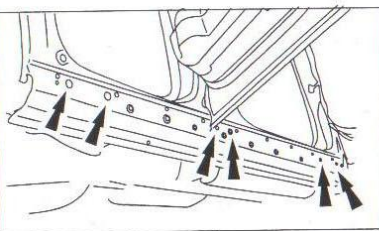
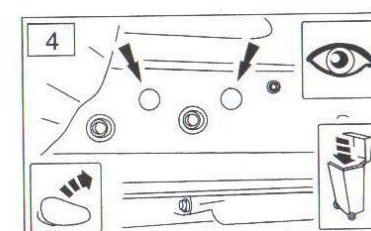
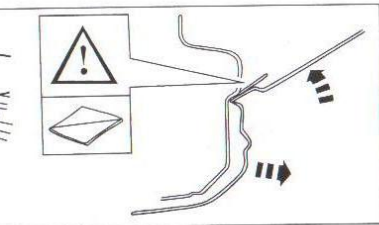
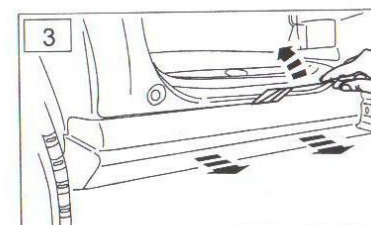
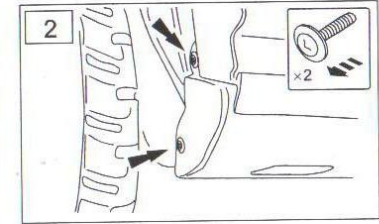
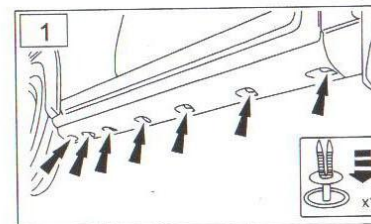
ISTRUZIONI PER L'USO
predellino Laterale

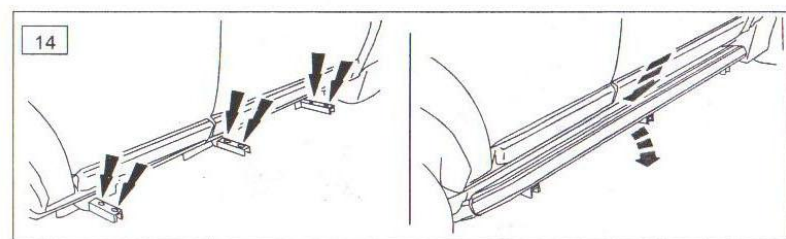
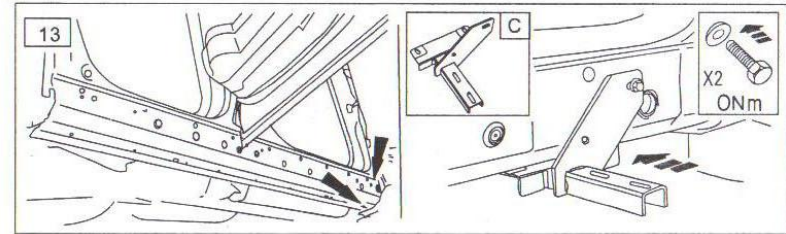
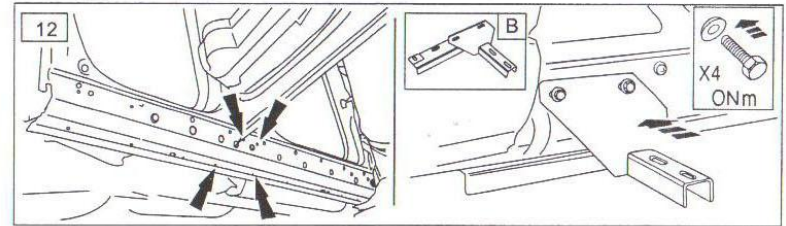
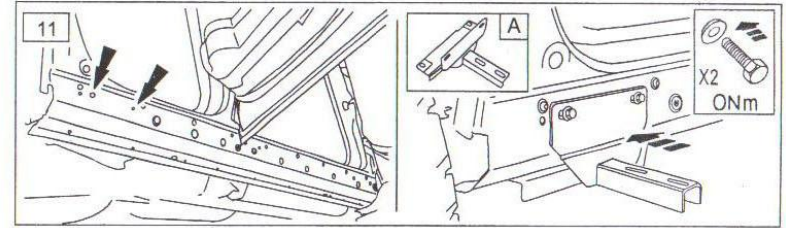
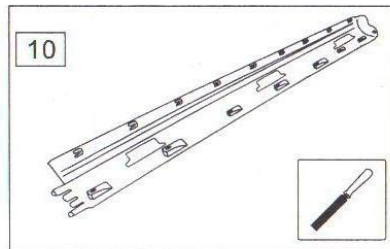
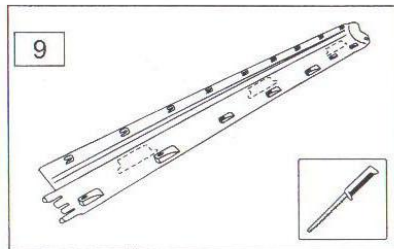
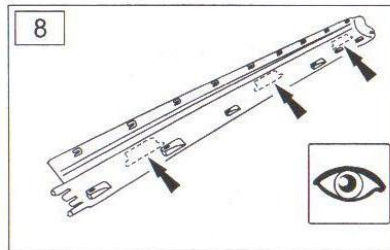
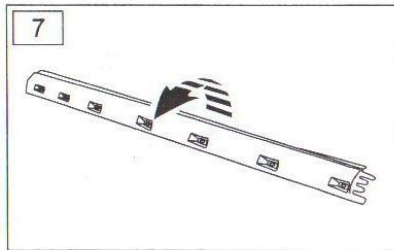
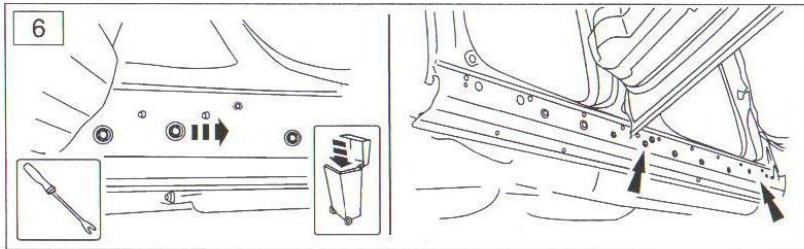
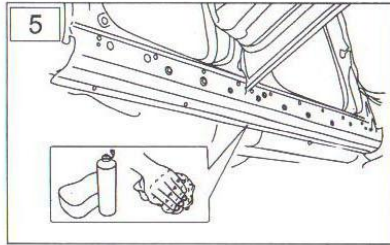
INSTRUCCIONES DE MONTAJE
Estribo Latera

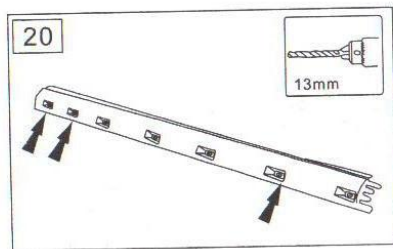
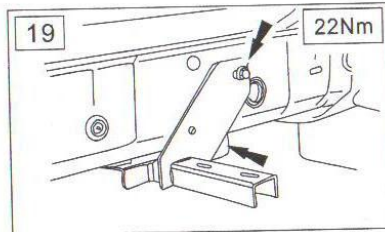
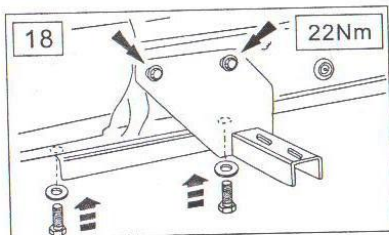
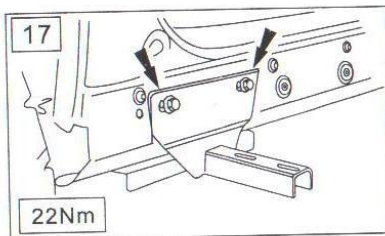
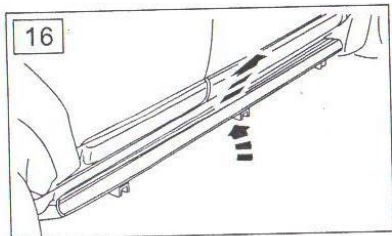
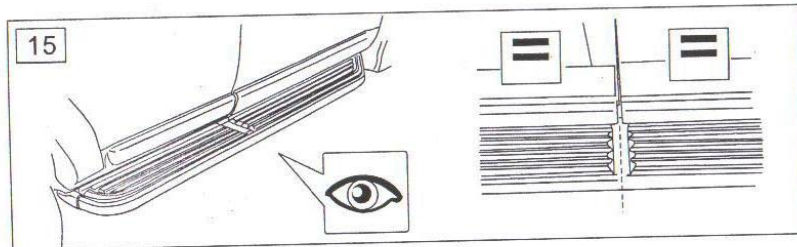
INSTRUÇÕES DE MONTAGEM
Degrau lateral



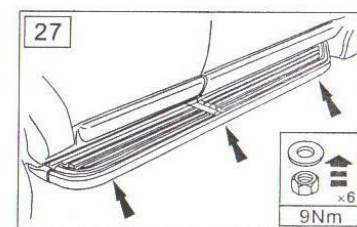
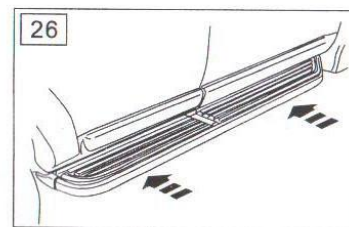
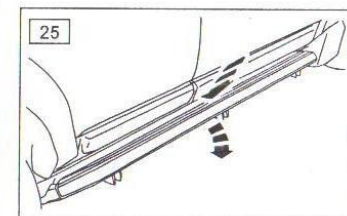
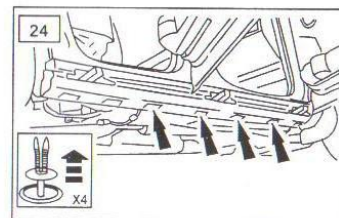
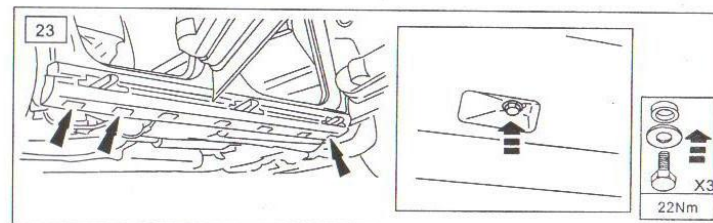
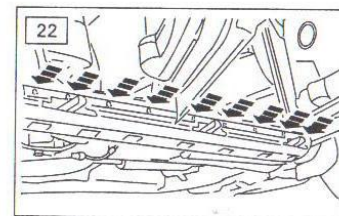
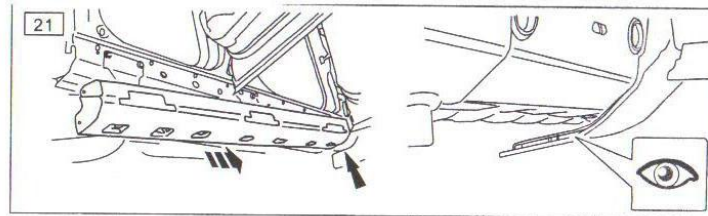
(GB) The following instructions are valid for both sides of the vehicle
 (D) folgende Anweisungen gelten für beide Fahrzeugseiten
 (F) Les instructions suivantes sont applicables aux deux cotes du véhicule
 (I) Le istruzioni seguenti sono valide per entrambe le fiancate della Veitura
 (E) Las siguientes instrucciones son validas para ambos lados del vehículo
 (P) As instruções a seguir aplicam-se a ambos os lados do veículo
 (NL) De volgende instructies zijn van toepassing op beide zijen van de auto
 (GR) Οι ακόλουθες οδηγίες ισχύουν και για τις δύο πλευρές του οχήματος
 (B) 次の取付け方法は車の両リドに適用できます。







5/7



6/7